



Apartment 802 SETL 50 Ludgate Hill, Birmingham, B3 1FJ

£1,550 Per month



Apartment 802 SETL 50 Ludgate Hill, Birmingham, B3 1FJ

£1,550 Per month

New to the market, this beautifully presented two double bedroom apartment is on the eighth floor of the newly built SETL development.

This impressive property benefits from a large open plan living area, a stylish fully integrated kitchen with separate utility cupboard, large master bedroom with fitted double wardrobe, luxury ensuite bathroom with large shower cubicle, second spacious double bedroom, luxury family bathroom with bath and shower, secure video-entry access system, wooden flooring and neutral decoration throughout.

Residents have full access to the co-working lounge, with superfast broadband, coffee on tap, and a choice of seating makes this the perfect place to work from home. Also onsite is a fitness studio, perfect for yoga sessions and PT workouts and a beautiful rooftop garden offering views right across the city with lush planting and all weather seating.

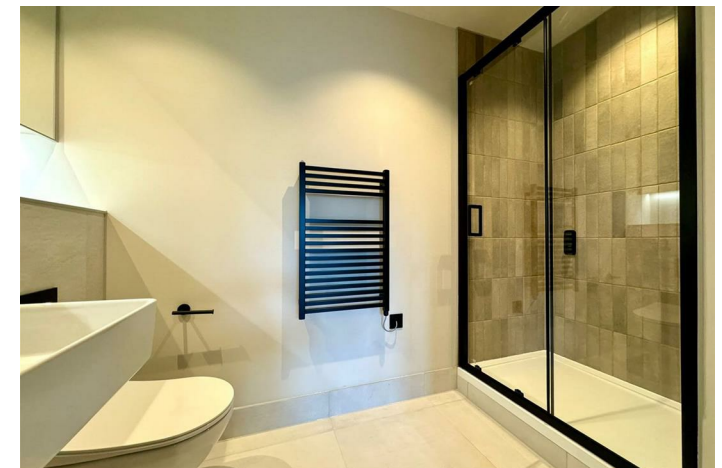
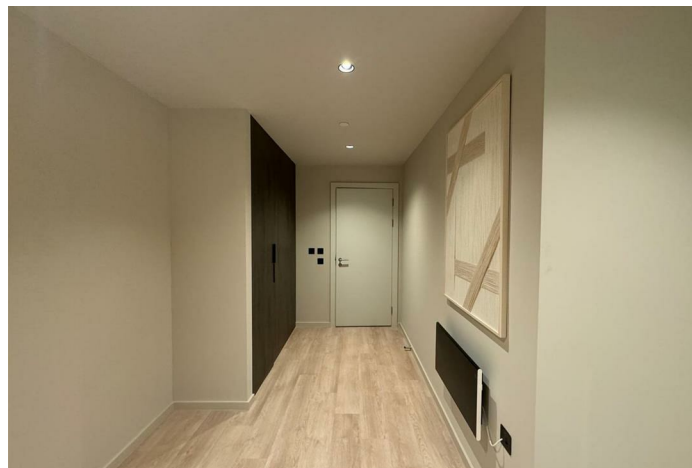
SETL is located in a prime Jewellery Quarter location, just in front of the BT tower, below the popular St Pauls Square, with its numerous bars and restaurants. Birmingham city centre and New Street railway station are just a few minutes walk away.

*Sorry, no allocated parking with this property *

Description



Situation

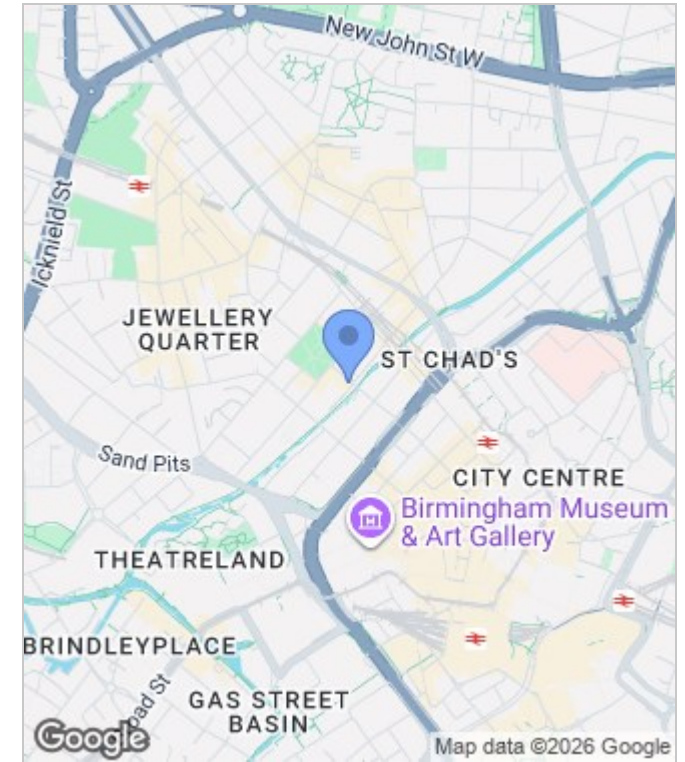


Furnished
Council Tax Band: New Build
Available: 30th July 2026

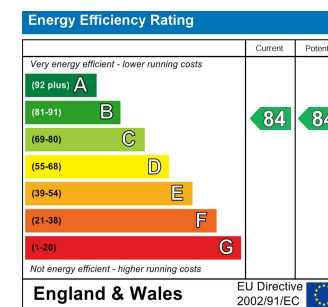
Floor Plans



Area Map



Energy Performance Graph



These particulars, whilst believed to be accurate are set out as a general outline only for guidance and do not constitute any part of an offer or contract. Intending purchasers should not rely on them as statements of representation of fact, but must satisfy themselves by inspection or otherwise as to their accuracy. No person in this firm's employment has the authority to make or give any representation or warranty in respect of the property.